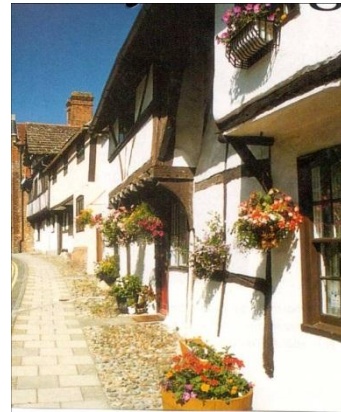
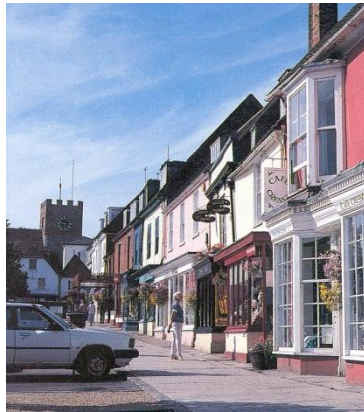


SMALL RURAL TOWNS IN THE SOUTH EAST

Community Service Assets



European Council for the Village and Small Town
(ECOVAST) May 2012

Contents

1. Purpose

2. Background

3. Basic Community Services – Opportunities and Threats

4. Methodology

- Access to Administrative Offices (Local Authorities)
- Access to Education (primary and secondary)
- Access to Post Offices
- Access to Chemists
- Access to Medical Care
- Access to Banks
- Access to Libraries
- Access to Leisure / Sports Centres
- Access to Ambulance Stations
- Access to Fire Stations (emergency services)
- Comparison to Economic Functional Rankings and Accessibility

5. The findings

- Ranking diagram
- Chart of 4 Ranking Categories
- Chart of Rankings by County

6. Conclusions

7. Other work

Sources

Table of Research, Analysis and Rankings

The study has been carried out by Valerie Carter, President of ECOVAST in 2012. It adds to the evidence data that has already been collected on small towns and is included on the ECOVAST website. www.ecovast.org

Cover photos on front page include the towns (from left to right and top to bottom) Lewes, East Sussex; New Alresford, Hampshire; Steyning, West Sussex; Wallingford, Oxfordshire; Shanklin, Isle of Wight; Cranbrook, Kent; Cranleigh, Surrey; Princes Risborough, Buckinghamshire; and Pangbourne, Berkshire

SMALL RURAL TOWNS IN THE SOUTH EAST

Community Service Assets

1. Purpose of Study

- 1.1 To provide additional evidence on small towns in South East England adding to the research in two earlier studies which looked at economic and heritage assets.
- 1.2 This study looks at the range of community services found in these small towns, and then ranked them
- 1.3 To discuss the potential opportunities and threats to community services.
- 1.5 To highlight other similar work that is being undertaken

2. Background

- 2.1 This study complements the 2010 Study by the South East England Development Agency which put forward a typology of towns in South East England based on their economic assets (retail and businesses) and their value to the local economy. That Study identified a series of Top Functional Towns and Upper Functional Towns which made significant contributions to the local economy. The definition used for a 'small town' was that they must serve a hinterland and have a population below 20,000 and had been agreed with all local authorities in SE England.
- 2.2 This study also complements a second study 2012 (March) Study carried out by Ecovast on heritage assets and their value to rural tourism.
- 2.3 This community services study 2012 (May), also carried out by Ecovast, is the third and final set of evidence collected on the small towns in South East England. The sources used are listed at the end of this report.
- 2.4 Small rural towns serve not only themselves but a hinterland of villages, hamlets and countryside. Often the population of the rural hinterland served is equal to the population of the small town itself.
- 2.4 It should be noted that there were 179 towns examined originally in the Typology Study of 2010 but 14 of them were omitted from the results as they did not provide the economic functions of a town. The second and third studies have only looked at the 165 towns which do provide the economic functions of a town.

3 Basic Community Services: opportunities and threats

- 3.1 This study identifies what community services exist in these 165 small towns.
- 3.2 People need a range of essential services to provide for their daily needs. One definition for a 'sustainable settlement' is one which is able to provide for most of its basic daily requirements without the need to travel long distances.

3.3 It has already been argued in the 2010 Typology study that small towns provide a wide range of retail and other businesses. These two economic assets also provide convenience foods and employment opportunities for people living in the town and immediate hinterland – services needed on a daily basis. They formed the basis of the economic typology of the towns which were ranked as Top, Upper, Middle or Lower Functional (economic) Towns and are therefore not re-evaluated in this study but the rankings of the economic towns are used to compare the results on community services.

3.4 This study looks at 10 different community services for each of the 165 towns. The community services selected include 8 that are needed for daily living and 2 others – libraries and leisure which provide knowledge and healthy enjoyment.

3.5 Small towns act as hubs of public transport. Many towns are on bus routes and have railway stations and many have good access from motorways and the study uses an assessment of communications.

3.6 Small towns have already suffered the loss of some services through centralisation. Further rationalisation towards bigger and better centres is still a potential threat.

3.7 The declining amount of money available through local authorities poses another threat and the levels of existing provisions are under constant review.

4 Methodology

4.1 This study used some of the data collected in the 2010 Typology Study on the economic function of towns. It has also used a number of new data sets, both national and local, for all 165 small towns. Each local community service assets has been given a score. The scores have then been added together to give a community service ranking.

4.2 Ten different Community Services have been looked at:

- **Service 1: Access to administrative centres (Local Authorities):** Some 41 of the smaller towns in the South East (out of 165) were administrative centres until 1974. Since Local Government Reform only a few of them now remain as administrative centres, and each one given a score of 10.
- **Service 2: Access to Education:** Secondary schools were listed in the 2010 Typology Study and given a score of 10. Primary Schools have been listed and also given a score of 10.
- **Service 3: Access to Post Offices:** All Post Offices have been listed and given a score of 10
- **Service 4: Access to Chemists:** All chemists have been listed and given a score of 10
- **Service 5: Access to Medical Care:** All doctors surgeries have been listed and given a score of 10 and local hospitals listed and also given a score of 10 giving a maximum of 20 points for medical care.
- **Service 6: Access to Banks:** All the major banks and building societies that are also banks have been listed. Any town which has a bank has been given 10 points.

- **Service 7: Access to Libraries:** All local authority libraries have been listed and given a score of 10
- **Service 8: Access to Leisure or Sports Centres:** All Leisure Centres and Sports centres have been listed and given a score of 10.
- **Service 9: Access to Ambulance Stations:** Ambulance Stations can be found in many small towns and have been listed and given a score of 10.
- **Service 10: Access to Fire Stations:** Retained Fire Stations – that is stations which are not permanently manned but employ part time fire-crews who have to live nearby – have been listed and given a score of 10.

4.3 These service rankings have then been compared to the economic functional rankings set out in 2010 Typology Study.

4.4 The community service rankings have also been compared to the communication evidence listed also in the 2010 Typology Study, though it splits the communication assets into rail and bus (public services) and good access to motorways (for private transport).

5 The findings

5.1 There were 165 small rural towns examined in the research which covered the nine counties in South East England: 17 in Berkshire; 23 in Buckinghamshire; 16 in East Sussex; 32 in Hampshire; 8 on the Isle of Wight; 26 in Kent; 19 in Oxfordshire; 11 in Surrey and 13 in West Sussex.

5.2 For the ten different Community Services that have been looked at:

- **Service 1: Access to administrative centres (Local Authorities):** Only 9 (5%) of the South East's small towns are now administrative centres which will provide access for local authority services such as housing, planning, refuse collection, car parking etc. There has been a move in some small towns to develop 'one stop shops' which sometimes can provide appointments with local authority officers.
- **Service 2: Access to Education:** Every small town has a primary school providing for children in the town and some of the villages in the hinterland if they do not have a primary school of their own. Secondary schools are only provided in small towns (and larger towns) and not villages. This asset serves the hinterland of villages and hamlets is considered an important service centre role. There were 85 small towns (51%) which had a secondary school.
- **Service 3: Access to Post Offices:** Every small town has a Post Office. They provide essential services which are highly valued. However their future is not secure. Some 'one stop shops' include the Post Offices. For example Tenterden, in Kent, now has a 'Gateway' which provides the Post Office, the Library and an office where people can meet local authority officers by appointment.
- **Service 4: Access to Chemists:** Every town has access to a chemists shop. Some feel threatened by local doctors' practices which also provide prescription services.
- **Service 5: Access to Medical Care:** Every small town does have a doctors' surgery. Some towns have a local hospital which can provide a variety of

local services which vary in what they offer. It can include convalescent and respite care and outpatients services such as physiotherapy. None are Accident and Emergency or trauma centres which are concentrated in major hospitals in the larger towns. These larger hospitals are becoming more and more specialised and involve longer journeys to get there.

- **Service 6: Access to Banks:** 136 towns (82%) have access to money through one of the major banks or building societies that are also banks.
- **Service 7: Access to Libraries:** 152 towns (92%) have a library.
- **Service 8: Access to Leisure or Sports Centres:** Only 66 (46%) of towns have a leisure or sports centre.
- **Service 9: Access to Ambulance Stations:** Ambulance Stations offer a variety of services and can be found in only 32 (19%) towns.
- **Service 10: Access to Fire Stations:** Retained Fire Stations – that is stations which are not permanently manned but employ part time fire-crews who have to live nearby – have been found in 110 (67%) towns.

5.2 The scores for each service was combined to give 4 separate Community Services Rankings for the 165 small towns – Top; Upper; Middle; and Lower Community Service Towns.

- There were 16 (10%) which ranked as **Top** Towns for Community Services
 - 6 of them ranked as Top Economic Functional Towns
 - 8 of them ranked as Upper Economic Functional Towns
 - 2 of them ranked as Middle Economic Functional Towns
- There were 69 (42%) which ranked as **Upper** Towns for Community Services
 - 3 of them ranked as Top Economic Functional Towns
 - 14 of them ranked as Upper Economic Functional Towns
 - 38 of them ranked as Middle Economic Functional Towns
 - 14 of them ranked only as Lower Economic Functional Towns
- There were 62 (37%) ranked as **Middle** Towns for Community Services
 - 14 of them ranked as Middle Economic Functional Towns
 - 48 of them ranked only as Lower Economic Functional Towns
- There were 18 (11%) which ranked as **Lower** Towns for Community Services
 - All 18 of them also ranked as Lower Economic Functional Towns. However these 18 still had access to primary schools, Post Offices, chemists and doctors.

5.3 The Top 16 towns for community services had excellent community services, with 4 of them having a perfect score, and another 9 only missing out on not being an administrative centre.

5.4 None of the 165 towns had a very poor level of community services.

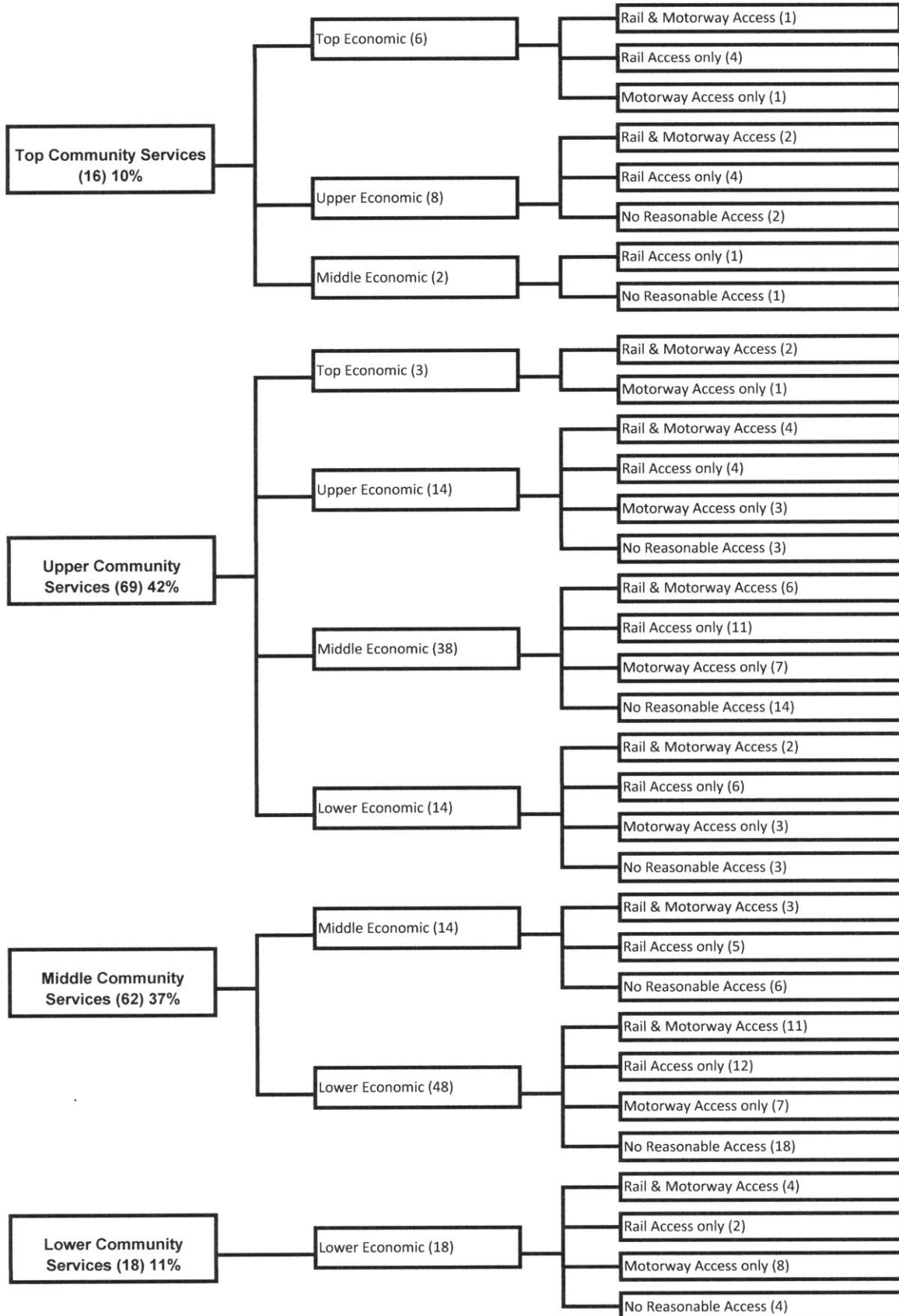
5.5 Access to a railway was found in all 4 Community Rankings, with 84 (51%) of towns having a railway station. Nearly all rail services radiate out from London giving access for commuting to work, although there is one east west route along the South Coast.

Ranking Diagram

Community Services Rankings

Economic Functional Rankings

Communications



5.6 All the towns have access to a bus route but the frequency of service (in other words the quality of its usefulness) may vary.

5.7 Some 79 (48%) of towns have reasonable access to a motorway – being within 10 miles of a motorway junction.

5.8 Some 35 (21%) of towns had both.

5.9 However 51 (31%) of towns have neither a railway station nor reasonable access to a motorway.

5.10 There does not appear to be any correlation between the levels of services in towns and the level of communications. All grades of communications are found in each community service ranking.

- 3 of the 16 Top Community Service Towns have a railway station and reasonable access to a motorway
- 9 of the 16 Top Community Service Towns do not have access to motorway but have only a railway station
- 1 of the 16 Top Community Service Towns have a reasonable access to a motorway but no railway station
- 3 of the 16 Top Community Service Towns have neither a railway nor a reasonable access to a motorway and so have poorer communications

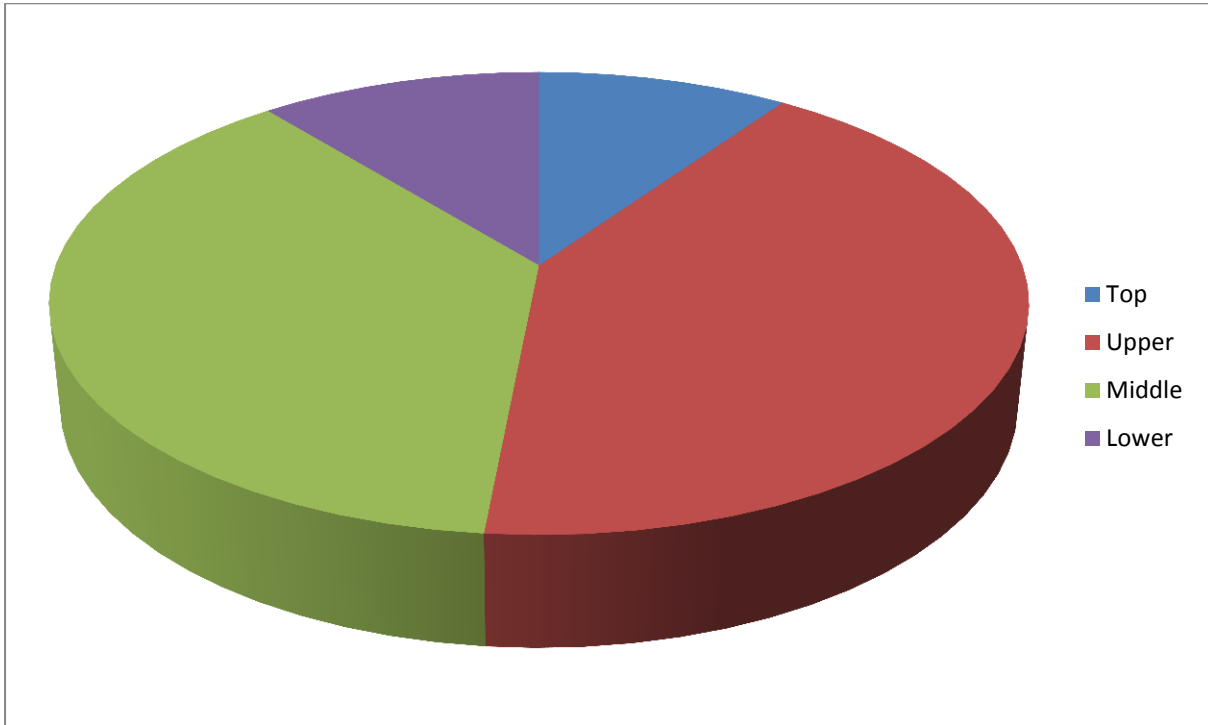
- 14 of the 66 Upper Community Service Towns have a railway station and reasonable access to a motorway
- 20 of the 66 Upper Community Service Towns do not have reasonable access to a motorway but have a railway station
- 12 of the 66 Upper Community Service Towns have only a reasonable access to a motorway but no railway station
- 20 of the 66 Upper Community Service Towns have neither a railway nor a reasonable access to a motorway and so have poorer communications

- 14 of the 65 Middle Community Service Towns have a railway station and reasonable access to a motorway
- 18 of the 65 Middle Community Service Towns do not have reasonable access to a motorway but have a railway station
- 9 of the 65 Middle Community Service Towns has only a reasonable access to a motorway but no railway station
- 24 of the 65 Middle Community Service Towns have neither a railway nor a reasonable access to a motorway and so have poorer communications

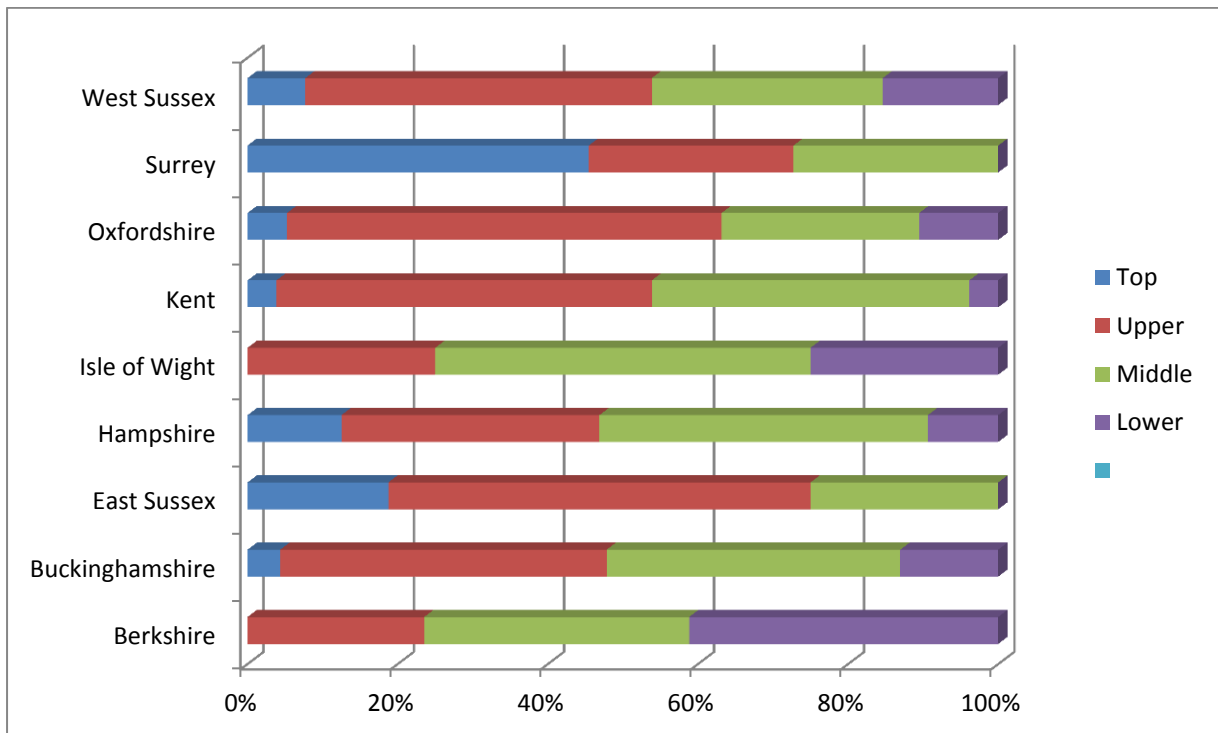
- 5 of the 18 Lower Community Service Towns have a railway station and reasonable access to a motorway
- 1 of the 18 Lower Community Service Towns do not have reasonable access to a motorway but have a railway station
- 8 of the 18 Lower Community Service Towns has only a reasonable access to a motorway but no railway station

- 4 of the 18 Lower Community Service Towns have neither a railway nor a reasonable access to a motorway and so have poorer communications

Diagram illustrating the ranking categories



Ranking by county



5.3 The detailed survey and analysis is shown in the Table at the end of this report.

7. Conclusions

7.1 It is clear from this research that the small towns in South East England have a good range of community services. The top and upper towns have an excellent level of community services – some of them have a perfect score. The middle ranked had reasonable community services. Even the lower ranked towns had a number of community services.

7.2 There is a correlation between the rankings for community services and economic rankings defined in the 2010 Typology Study although the community services rankings are often a level higher than the economic functional rankings. All the Top and Upper Ranked Towns for Economic Functions are also Top or Upper Ranked Towns for Community Services. All the Lower Ranked Towns for Community Services are also Lower Ranked Towns for Economic Functional.

7.3 However, although this picture looks rosy, there remains the threat of losing some of these services to further centralisation or removal of some services through declining local authority budgets where difficult decisions are needed to balance budgets when faced with major budget cuts. Six of the 10 services looked at are dependent upon public sector funding.

7.5 If small towns are to remain or become more sustainable then the level of community services provided at local level is a critical factor.

8 Other work

8.1 Action for Market Towns (AMT), the national membership body for small and market towns undertakes work on the state of market towns across England and Wales and examines opportunities and threats. Papers are published on their web site.

- Local loyalty guide –This publication explores options available to communities to support their town centres and the services and retail offer within them through the promotion of Shop Local schemes and similar - <http://towns.org.uk/amt-i/loyalty-cards-shop-local/> (free to AMT members)
- Community Led Planning/ Neighbourhood Planning – The charity has a track record in supporting communities in developing Community Led Plans having played an instrumental role in the creation and roll out of the Market Town Health-check process which was introduced in the Rural White Paper 2000. Community Led Planning is a step by step process that enables communities to get involved in shaping the economic, environmental and social wellbeing of their settlements. More recently AMT has been delivering training and support to communities wishing to understand and implement new rights available to them as a result of the Localism Act, many of which have the potential to safeguard much needed services within those settlements. For

more information visit: <http://towns.org.uk/2010/06/17/amt-town-action-planning/>

- 21st Century Town Centres Report – This guide sets out best practice illustrating the ways in which communities can develop, improve and sustain their high street offering – <http://towns.org.uk/2011/10/13/new-21st-century-town-centres-report/>
- Case Study Database – AMT has collected over 300 case studies illustrating best practice in towns across a range of issues, many of which relate to improving service provision and delivery. The database is available to AMT members. Insert <http://towns.org.uk/>

8.2 Small Towns for Tomorrow is a think tank on small towns which brings together academics, practitioners and others with an interest in raising the profile of small towns at a national level in terms of social and economic needs, through the publication of a series of essays and research. The first essay for example set out the topics that the group believes... More information can be found: www.smalltownsfortomorrow.org

8.3 Community Banking is a pressure group representing sectoral interests adversely affected by the closure of local bank branches, particularly of the last or only bank in a rural or urban community. They produce frequent analyses on the situation including the most recent report: Last Bank in Town Analysis - <http://www.communitybanking.org.uk/revised-last-bank-in-town.htm>

8.4 This study by Ecovast will also be forwarded to Action for Market Towns to add to their evidence base.

Sources:

Population: 2001 Census and Commission for Rural Communities data

Functional Rankings: taken from the Typology Study (see below)

Public Transport: bus routes from the Internet and trains from ABC Rail Guide

Former Boroughs and Urban Districts: Local Government Handbook

Administrative (District) Centres: Local Government Handbook

Post Offices: Yellow Pages Business Database

Education Primary and Secondary: Yellow Pages Business Database and Local Authority Internet Sites

Post Offices: Yellow Pages Business Database and Local Internet Sites

Chemists: Yellow Pages Business Database

Doctors and Hospitals: National Health Service webpages

Banks and Building Societies: Yellow Pages Business Database

Libraries: Local Authority web pages

Leisure and Sport Centres: Yellow Pages Business Database

Ambulance Services: National Health Service webpages

Fire Stations: Local Authority webpages

Previous Studies:

There have been a series of studies on the assets of small towns in South East England.

A Typology of Towns and Their Value to the Local Economy: by the South East England Development Agency (SEEDA) published in 2010

Analysis of Size and Functions – Addendum to the above Study: by the European Council for the Village and Small Town (ECOVAST) published in 2011

Heritage Assets and Their Value to Rural Tourism: by the European Council for the Village and Small Town (ECOVAST) published in 2012

A study on smaller towns across Europe has also been carried out.

Their Size and Potential Importance in Europe: also by the European Council for the Village and Small Town (ECOVAST) published in 2010

SMALL RURAL TOWNS IN THE SOUTH EAST (165 ANALYSED)

ANALYSIS OF COMMUNITY SERVICE ASSETS

Compared to functional ranking (economic) and communications

County Area	Unitary or District	Town	Population	FUNCTIONAL (ECONOMIC) TOWN RANKINGS: Top, Upper, Middle, Lower	Public Transport RAIL SCORE	Within 10 miles motorway Junction	Former Administrative Centres	1	2	3	4	5	6	7	8	9	10	TOTAL SERVICE SCORE
								Education (Primary & Secondary) SCORE	Administrative Centre (District) SCORE	Medical (Doctor & Hospital) SCORE	Chemists SCORE	Post Offices SCORE	Access to Money SCORE	Libraries SCORE	Leisure / Sport Centres SCORE	Ambulance Stations SCORE	Fire Stations SCORE	
TOP COMMUNITY SERVICE TOWNS																		
Top Community Service Towns and Top Economic Functional Towns																		
ES	Lewes.	Lewes	15,900	Top	10		B	10	20	10	10	20	10	10	10	10	10	120
HA	East.Hampshire.	Petersfield	13,000	Top	10		U	10	20	10	10	20	10	10	10	10	10	120
SU	Mole Valley	Dorking	16,000	Top	10	10	U	10	20	10	10	20	10	10	10	10	10	120
SU	Waverley	Godalming	20,000	Top	10		B	10	20	10	10	20	10	10	10	10	10	120
OX	South.Oxfordshire.	Wallingford	8,000	Top		10	B	10	20	10	10	20	10	10	10		10	110
HA	New.Forest.	Lymington	14,200	Top	10		B		20	10	10	20	10	10	10	10	10	110
Top Community Service Towns and Upper Economic Functional Towns																		
ES	Wealden.	Crowborough	20,000	Upper	10		U	10	20	10	10	20	10	10	10		10	110
ES	Wealden.	Uckfield	15,300	Upper	10				20	10	10	20	10	10	10	10	10	110
HA	East.Hampshire.	Alton	16,000	Upper	10		U		20	10	10	20	10	10	10	10	10	110
HA	New.Forest.	Ringwood	13,300	Upper					20	10	10	20	10	10	10	10	10	110
KE	Ashford	Tenterden	6,900	Upper			B		20	10	10	20	10	10	10	10	10	110
SU	Tandridge	Caterham	15,000	Upper	10	10			20	10	10	20	10	10	10	10	10	110
SU	Tandridge	Oxted	12,500	Upper	10	10		10	20	10	10	10	10	10	10	10	10	110
SU	Waverley	Haslemere	11,600	Upper	10		U		20	10	10	20	10	10	10	10	10	110
Top Community Service Towns and Middle Economic Functional Towns																		
BU	Chiltern.	Amersham	20,000	Middle	10		U	10	10	10	10	20	10	10	10	10	10	110
WS	Chichester	Midhurst	6,100	Middle			U		20	10	10	20	10	10	10	10	10	110
UPPER COMMUNITY SERVICE TOWNS																		
Upper Community Service Towns and Top Economic Functional Towns																		
BU	Wycombe.	Marlowe	18,400	Top		10	U		20	10	10	20	10	10	10		10	100
HA	Test.Valley.	Romsey	17,300	Top	10	10	B		20	10	10	20	10	10	10		10	100
OX	South.Oxfordshire.	Henley on Thames	10,500	Top	10	10	B		20	10	10	20	10	10	10		10	100
Upper Community Service Towns and Upper Economic Functional Towns																		
BU	Aylesbury.Vale.	Buckingham	12,500	Upper	10		B		20	10	10	20	10	10	10		10	100
OX	South.Oxfordshire.	Thame	10,800	Upper			U		20	10	10	20	10	10	10		10	100
ES	Wealden.	Hailsham	19,100	Upper					20	10	10	10	10	10	10	10	10	100
KE	Swale'	Faversham	18,200	Upper	10	10	B		10	10	10	20	10	10	10	10	10	100
SU	Mole Valley	Leatherhead	10,000	Upper	10	10	U		20	10	10	10	10	10	10	10	10	100
SU	Reigate & Banstead	Horley	19,000	Upper	10	10			20	10	10	20	10	10	10	10		100
BU	Chiltern.	Chesham	20,000	Upper	10		U		20	10	10	10	10	10	10		10	90
BU	South.Buckinghamshire.	Beaconsfield	12,900	Upper	10	10	U		20	10	10	10	10	10	10		10	90
HA	New.Forest.	New Milton	10,000	Upper	10				20	10	10	10	10	10	10		10	90
ES	Lewes.	Newhaven	12,200	Upper	10				20	10	10	10	10	10		10	10	90
SU	Waverley	Cranleigh	10,000	Upper					10	10	10	10	10	10	10	10	10	90

County Area	Unitary or District	Town	Population	FUNCTIONAL (ECONOMIC) TOWN RANKINGS: Top, Upper, Middle, Lower	Public Transport RAIL SCORE	Within 10 miles motorway Junction	Former Administrative Centres	Administrative Centre (District) SCORE										TOTAL SERVICE SCORE		
								1	2	3	4	5	6	7	8	9	10			
BK	Bracknell.Forest.	Crowthorne	5,000	Upper		10			20	10	10	10	10	10	10	10	10	10	10	80
BU	Milton.Keynes.	Newport Pagnell	14,000	Upper		10	U		10	10	10	10	10	10	10	10	10	10	10	80
KE	Shepway	Hythe	10,000	Upper		10	B		20	10	10	10	10	10	10	10	10	10	10	80
Upper Community Service Towns and Middle Economic Functional Towns																				
HA	East.Hampshire.	Bordon/Whitehill	16,000	Middle					20	10	10	20	10	10	10	10	10	10	10	100
HA	Havant.	Emsworth	8,100	Middle	10				20	10	10	20	10	10	10	10	10	10	10	100
KE	Sevenoaks	Edenbridge	7,100	Middle	10	10			20	10	10	20	10	10	10	10	10	10	10	100
KE	Swale	Sheerness	11,600	Middle	10				20	10	10	20	10	10	10	10	10	10	10	100
OX	Vale.of.White.Horse.	Faringdon	6,100	Middle					20	10	10	20	10	10	10	10	10	10	10	100
ES	Lewes.	Seaford	19,000	Middle	10				20	10	10	10	10	10	10	10	10	10	10	100
ES	Rother.	Battle	5,100	Middle	10				20	10	10	10	10	10	10	10	10	10	10	100
ES	Rother.	Rye	4,100	Middle	10		B		20	10	10	20	10	10	10	10	10	10	10	100
ES	Wealden.	Heathfield	10,000	Middle	10				20	10	10	10	10	10	10	10	10	10	10	100
OX	Cherwell	Kidlington	14,900	Middle		10			20	10	10	10	10	10	10	10	10	10	10	100
WS	Horsham.	Billingshurst	5,400	Middle	10				20	10	10	10	10	10	10	10	10	10	10	100
BK	Newbury.	Hungerford	4,900	Middle	10	10			20	10	10	10	10	10	10	10	10	10	10	90
BU	South.Buckinghamshire.	Gerrards Cross	9,600	Middle		10			10	10	10	20	10	10	10	10	10	10	10	90
BU	Wycombe.	Princes Risborough	10,400	Middle	10	10			20	10	10	10	10	10	10	10	10	10	10	90
HA	Hart.	Odiham	2,900	Middle	10	10			20	10	10	20	10	10	10	10	10	10	10	90
HA	Hart.	Yateley	16,000	Middle					20	10	10	10	10	10	10	10	10	10	10	90
HA	New.Forest.	Fordingbridge	5,700	Middle					20	10	10	20	10	10	10	10	10	10	10	90
HA	New.Forest.	Lyndhurst	2,200	Middle		10		10	10	10	10	20	10	10	10	10	10	10	10	90
HA	Winchester.	New Arlesford	5,000	Middle	10				20	10	10	10	10	10	10	10	10	10	10	90
IW	Isle of Wight	Sandown	9,500	Middle	10		U		20	10	10	10	10	10	10	10	10	10	10	90
KE	Dover	Sandwich	4,300	Middle	10		B		20	10	10	10	10	10	10	10	10	10	10	90
KE	Tunbridge Wells	Cranbrook	4,200	Middle					20	10	10	10	10	10	10	10	10	10	10	90
OX	Vale.of.White.Horse.	Wantage	12,700	Middle			U		10	10	10	20	10	10	10	10	10	10	10	90
OX	West.Oxfordshire	Chipping Norton	5,600	Middle			B		20	10	10	10	10	10	10	10	10	10	10	90
WS	Horsham.	Steyning	9,000	Middle					20	10	10	10	10	10	10	10	10	10	10	90
KE	Tunbridge Wells	Paddock Wood	7,800	Middle	10				20	10	10	10	10	10	10	10	10	10	10	90
BK	Newbury.	Theale	2,700	Middle	10	10			20	10	10	10	10	10	10	10	10	10	10	80
BK	Windsor & Maidenhead	Ascot	9,000	Middle	10	10			10	10	10	20	10	10	10	10	10	10	10	80
BU	Chiltern.	Chalfont St Peter	10,000	Middle		10			20	10	10	10	10	10	10	10	10	10	10	80
ES	Wealden.	Forest Row	3,600	Middle					20	10	10	10	10	10	10	10	10	10	10	80
HA	Basingstoke.and.Deane.	Tadley	8,200	Middle		10			10	10	10	10	10	10	10	10	10	10	10	80
IW	Isle of Wight	West Cowes	12,000	Middle					20	10	10	10	10	10	10	10	10	10	10	80
KE	Kent	New Romney	9,400	Middle					20	10	10	10	10	10	10	10	10	10	10	80
OX	South.Oxfordshire.	Watlington	4,000	Middle		10			20	10	10	10	10	10	10	10	10	10	10	80
OX	West.Oxfordshire	Burford	1,200	Middle					20	10	10	10	10	10	10	10	10	10	10	80
OX	West.Oxfordshire	Carterton	12,900	Middle					20	10	10	10	10	10	10	10	10	10	10	80
OX	West.Oxfordshire	Woodstock	2,300	Middle		10	B		20	10	10	10	10	10	10	10	10	10	10	80
WS	Chichester	Selsey	9,700	Middle					20	10	10	10	10	10	10	10	10	10	10	80

County Area	Unitary or District	Town	Population	FUNCTIONAL (ECONOMIC) TOWN RANKINGS: Top, Upper, Middle, Lower	Public Transport RAIL SCORE	Within 10 miles motorway junction	Former Administrative Centres	Administrative Centre (District) SCORE	1	2	3	4	5	6	7	8	9	10	TOTAL SERVICE SCORE
									Education (Primary & Secondary) SCORE	Medical (Doctor & Hospital) SCORE	Chemists SCORE	Post Offices SCORE	Access to Money SCORE	Libraries SCORE	Leisure / Sport Centres SCORE	Ambulance Stations SCORE	Fire Stations SCORE		
Upper Community Service Towns and Lower Economic Functional Towns																			
BU	Chiltern.	Great Missenden	4,000	Lower	10				10	10	10	20	10	10	10			10	90
ES	Wealden.	Wadhurst	3,600	Lower	10				20	10	10	10	10	10	10			10	90
KE	Medway	Hoo	5,200	Lower		10			20	10	10	10	10	10	10			10	90
WS	Arun	Arundel	3,200	Lower	10		B		10	10	10	20	10	10			10	10	90
WS	Horsham.	Pulborough	7,100	Lower	10				10	10	10	10	10	10	10	10	10	10	90
BU	Milton Keynes.	Olney	6,000	Lower			B		20	10	10	10	10	10				10	80
ES	Wealden.	Mayfield	2,100	Lower					20	10	10	10	10	10				10	80
HA	New Forest.	Hythe	5,200	Lower		10			10	10	10	10	10	10			10	10	80
KE	Swale	Queenborough	9,000	Lower	10		B		10	10	10	10	10	10			10	10	80
KE	Maidstone	Lenham	2,000	Lower	10	10			20	10	10	10	10	10				10	80
KE	Sevenoaks	Westerham	2,900	Lower		10			10	10	10	10	10	10	10	10		10	80
KE	Tonbridge & Malling	Borough Green	4,200	Lower	10	10			20	10	10	10	10	10				10	80
OX	South Oxfordshire	Goring	5,500	Lower	10				20	10	10	10	10	10				10	80
WS	Horsham.	Henfield	4,500	Lower					10	10	10	10	10	10	10	10		10	80
MIDDLE COMMUNITY SERVICE TOWNS																			
Middle Community Service Towns and Middle Economic Functional Towns																			
BU	Aylesbury Vale.	Wendover	7,300	Middle	10				20	10	10	10	10	10	10				70
BU	Wycombe.	Bourne End	3,000	Middle	10	10			20	10	10	10	10	10	10				70
ES	Lewes.	Peacehaven	17,500	Middle					10	10	10	10	10	10	10	10			70
HA	Basingstoke and Deane.	Whitchurch	4,300	Middle	10	10			20	10	10	10	10	10				10	70
HA	Hart.	Hook	6,800	Middle	10	10			10	10	10	20	10			10			70
HA	New Forest.	Brockenhurst	2,800	Middle					20	10	10	10	10					10	70
IW	Isle of Wight	Shanklin	9,000	Middle			B		10	10	10	10	10	10				10	70
KE	Dartford	Longfield	8,400	Middle	10				20	10	10	10	10	10					70
KE	Tonbridge & Malling	Snodland	9,300	Middle	10				20	10	10	10	10	10					70
WS	Horsham.	Storrington	7,700	Middle					10	10	10	10	10	10	10			10	70
WS	Mid Sussex	Hassocks	6,000	Middle	10				20	10	10	10	10	10	10				70
BU	Milton Keynes.	Wolverton	11,000	Middle	10				10	10	10	10	10	10	10				60
OX	Vale of White Horse.	Grove	5,000	Middle					10	10	10	10	10	10	10				60
WS	Mid Sussex	Cuckfield	3,200	Middle			U		20	10	10	10		10					60
Middle Community Service Towns and Lower Economic Functional Towns																			
BK	Newbury.	Burghfield.	5,600	Lower					20	10	10	10	10	10	10				70
BK	Newbury.	Lambourne	2,900	Lower		10			10	10	10	10		10	10			10	70
BK	Newbury.	Pangbourne.	3,000	Lower	10	10			10	10	10	10	10	10	10			10	70
BK	Wokingham.	Wargrave	2,800	Lower		10			20	10	10	10		10				10	70
BK	Wokingham.	Winnersh	7,000	Lower	10	10			20	10	10	10	10	10	10				70
BU	Aylesbury Vale.	Winslow	4,500	Lower					10	10	10	10	10	10	10			10	70
BU	Milton Keynes.	Woburn Sands	4,900	Lower	10				20	10	10	10	10	10	10				70

County Area	Unitary or District	Town	Population	FUNCTIONAL (ECONOMIC) TOWN RANKINGS: Top, Upper, Middle, Lower	Public Transport RAIL SCORE	Within 10 miles motorway junction	Former Administrative Centres	Administrative Centre (District) SCORE	Education (Primary & Secondary) SCORE	Post Offices SCORE	Chemists SCORE	Medical (Doctor & Hospital) SCORE	Access to Money SCORE	Libraries SCORE	Leisure / Sport Centres SCORE	Ambulance Stations SCORE	Fire Stations SCORE	TOTAL SERVICE SCORE
																		Total
HA	Basingstoke and Deane.	Kingsclere	3,200	Lower					10	10	10	10	10	10		10	70	
HA	Basingstoke and Deane.	Overton	3,300	Lower	10	10			10	10	10	10	10	10		10	70	
HA	Eastleigh.	Botley	5,000	Lower		10			10	10	10	10	10	10		10	70	
HA	Test Valley.	Stockbridge	3,000	Lower					20	10	10	10	10			10	70	
HA	Winchester.	Bishops Waltham	6,000	Lower		10			10	10	10	10	10	10		10	70	
IW	Isle of Wight	Bembridge	3,400	Lower					10	10	10	10	10	10		10	70	
IW	Isle of Wight	Ventnor	5,800	Lower			U		10	10	10	10	10	10		10	70	
KE	Ashford	Wye	2,000	Lower	10				10	10	10	10	10	10		10	70	
KE	Dover	Aylesham	1,500	Lower	10				10	10	10	10	10	10		10	70	
KE	Maidstone	Marden	2,400	Lower	10	10			10	10	10	10	10	10		10	70	
KE	Tunbridge Wells	Hawkhurst	3,100	Lower					10	10	10	10	10	10		10	70	
OX	South Oxfordshire.	Wheatley	5,400	Lower					10	10	10	10	10	10		10	70	
SU	Tandridge	Lingfield	3,000	Lower	10	10			10	10	10	10	10	10		10	70	
WS	Chichester	Petworth	2,200	Lower					10	10	10	10	10	10		10	70	
WS	Mid Sussex	Hurstpierpoint	6,100	Lower					10	10	10	10	10	10		10	70	
BK	Wokingham.	Twyford	7,000	Lower	10				10	10	10	10	10	10			60	
BU	Aylesbury Vale.	Haddenham	4,700	Lower	10				10	10	10	10		10		10	60	
BU	Chiltern.	Chalfont St Giles	4,700	Lower		10			10	10	10	10	10	10			60	
BU	Milton Keynes.	Stoney Stratford	14,000	Lower	10				10	10	10	10	10	10			60	
BU	South Buckinghamshire.	Burnham	5,000	Lower	10	10			10	10	10	10	10	10			60	
ES	Lewes.	Ringmer	2,900	Lower					20	10		10	10	10			60	
ES	Rother.	Robertsbridge	1,900	Lower	10				20	10	10	10	10				60	
ES	Wealden.	Polegate	7,000	Lower	10				10	10	10	10	10	10			60	
HA	East Hampshire.	Horndean	13,000	Lower					10	10	10	10		10		10	60	
HA	East Hampshire.	Liphook	6,000	Lower	10				10	10	10	10	10	10			60	
HA	Hart.	Hartley Witney	7,400	Lower		10			10	10	10	10	10			10	60	
HA	Havant.	South Hayling	7,000	Lower			U		10	10	10	10	10	10			60	
HA	New Forest.	Milford On Sea.	6,000	Lower					10	10	10	10	10	10			60	
HA	Winchester.	Wickham.	1,900	Lower		10			10	10	10	10	10			10	60	
IW	Isle of Wight	East Cowes	7,000	Lower					10	10	10	10		10		10	60	
KE	Gravesham	Meopham	4,200	Lower	10				10	10	10	10	10	10			60	
KE	Maidstone	Headcorn	2,400	Lower	10	10			10	10	10	10	10			10	60	
KE	Maidstone	Staplehurst	5,100	Lower	10	10			10	10	10	10	10	10			60	
KE	Thanet	Minster	3,500	Lower	10				10	10	10	10	10	10			60	
KE	Tonbridge & Malling	West Malling	2,100	Lower	10	10			10	10	10	10	10	10			60	
OX	Vale of White Horse.	Botley	8,000	Lower					10	10	10	10	10	10			60	
OX	West Oxfordshire	Charbury	2,900	Lower	10				10	10	10	10		10		10	60	
OX	West Oxfordshire	Eynsham	4,600	Lower					10	10	10	10		10		10	60	
SU	Mole Valley	Great Bookham	10,000	Lower	10	10			10	10	10	10	10	10			60	

County Area	Unitary or District	Town	Population	FUNCTIONAL (ECONOMIC) TOWN RANKINGS: Top, Upper, Middle, Lower	Public Transport RAIL SCORE	Within 10 miles motorway junction	Former Administrative Centres	TOTAL SERVICE SCORE														
								1	2	3	4	5	6	7	8	9	10	Total				
SU	Surrey Heath	Bagshot	5,200	Lower	10	10															60	
WS	Horsham.	Southwater	8,200	Lower																		60
LOWER COMMUNITY SERVICE TOWNS																						
Lower Community Service Towns and Lower Economic Functional Towns																						
BK	Bracknell.Forest.	Binfield	4,000	Lower	10	10				10	10	10	10		10							50
BK	Windsor & Maidenhead	Cookham	4,000	Lower		10				10	10	10	10		10							50
BK	Windsor & Maidenhead	Datchet	4,000	Lower		10				10	10	10	10		10							50
BK	Windsor & Maidenhead	Eton.	2,000	Lower	10	10	U			10	10		10	10								50
BK	Windsor & Maidenhead	Old Windsor	7,000	Lower		10				10	10	10	10		10							50
BK	Windsor & Maidenhead	Sunningdale	5,000	Lower	10	10				20	10		10		10							50
BU	South.Buckinghamshire.	Farnham Common	5,000	Lower		10				10	10	10	10		10							50
BU	South.Buckinghamshire.	Iver.Heath.	7,300	Lower		10				10	10	10	10			10						50
HA	Gosport	Lee on Solent	6,000	Lower		10				10	10	10	10		10							50
HA	Winchester.	Denmead	6,000	Lower		10				10	10	10	10		10							50
OX	South.Oxfordshire.	Benson	3,000	Lower		10				10	10	10	10		10							50
BK	Wokingham.	Finchampstead.	5,000	Lower						10	10		10		10							40
BU	South.Buckinghamshire.	Denham	1,300	Lower	10	10				10	10	10		10								40
HA	East.Hampshire.	Liss	6,400	Lower	10					10	10	10	10									40
IW	Isle of Wight	Brading	1,700	Lower						10	10	10	10									40
IW	Isle of Wight	Wootton Bridge	2,000	Lower						10	10	10	10									40
KE	Sevenoaks	Kemsing	3,700	Lower	10	10				10	10		10		10							40
OX	South.Oxfordshire.	Berinsfield	2,700	Lower						10	10		10		10							40

Table completed April 2012